



Save Energy Infographic

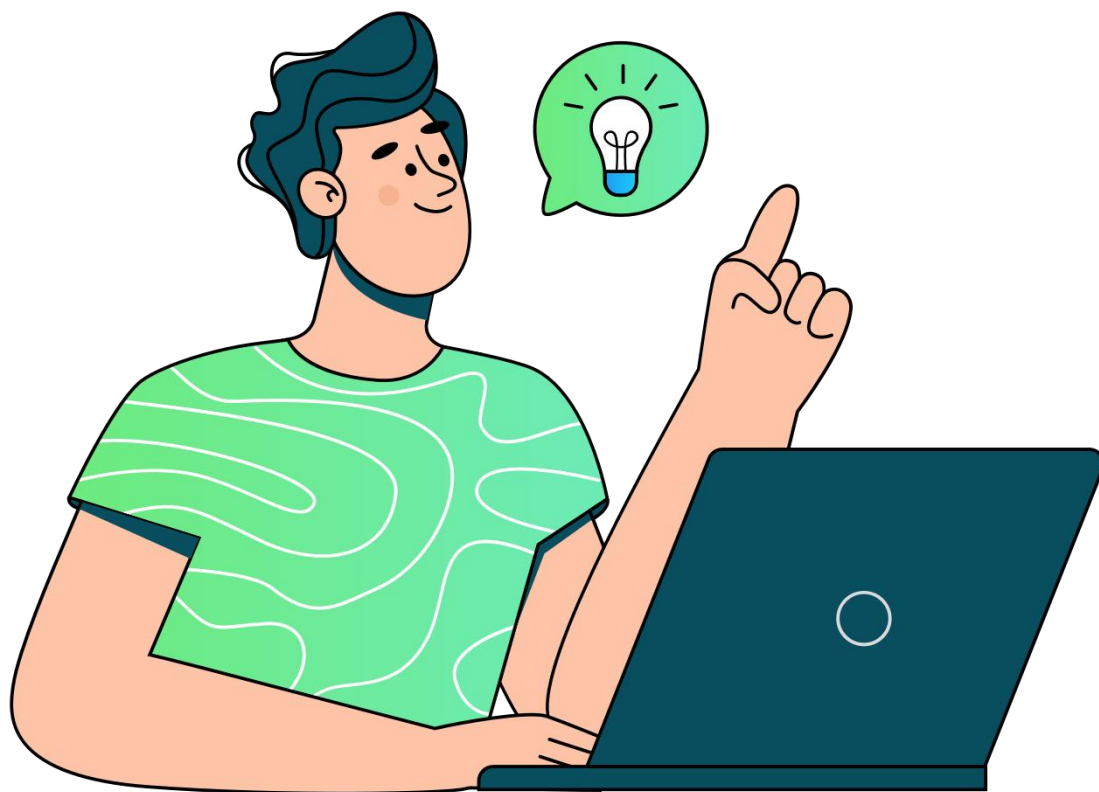
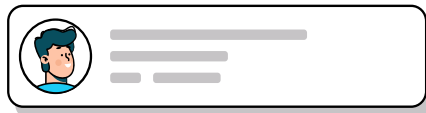
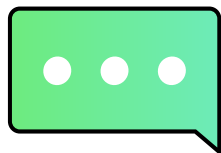
www.mphtj.gov.my





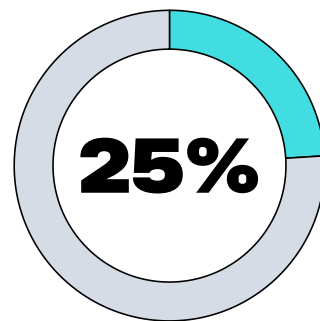
World Environment Day

"Preserve the environment & appreciate what surrounds you"

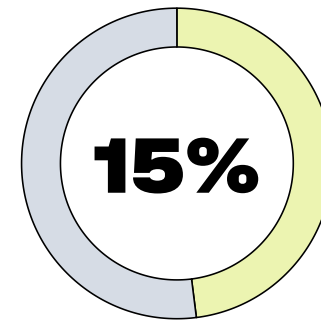


Lets save the world together!

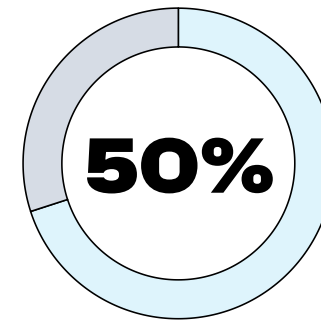
DID YOU KNOW??



Transportation accounts for more than 25% of carbon emissions from fossil fuels burned through cars, ships, planes or train.



We reduced our carbon emissions across our manufacturing operations by 15%?



CO2 emissions have increased by almost 50% since 1990?



How would you like it if someone turned you on. And left you there??



ENERGY SAVING REMINDER

Remember to turn off the computer at the end of the day.





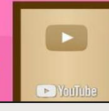
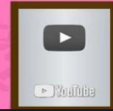
A TIP FROM "MAJLIS PERBANDARAN HANG TUAH JAYA"



I make the most of natural light



I disconnect the chargers when not in use



I turn off the computer when I finish my work



I turn off the light when I don't need it

I use energy-saving bulbs



I try to send the documentation by e-mail. If I print, it is on both sides of the face.





ENERGY SAVING TIPS

Quick guide to energy savings



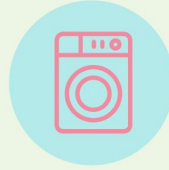
UNPLUG

Inactive devices if you are not using them



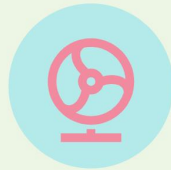
SWITCH

Off the lights after using them



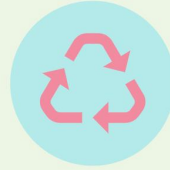
WASH

Full loads of laundry



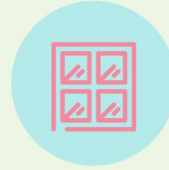
CLEAN

The fan and air conditioner filter regularly



RECYCLE

Old devices before buying new ones



OPEN

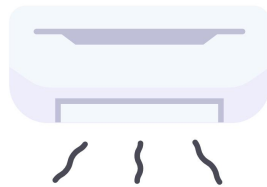
The windows at night if possible

LAST ONE OUT PLEASE SWITCH OFF THE LIGHTS & AC



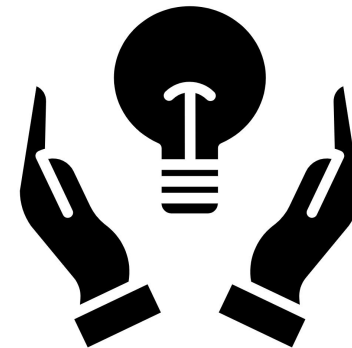


LAST ONE OUT
PLEASE SWITCH
OFF THE
LIGHTS & AC



CREATED WITH
EDIT.org

SAVE ENERGY



*If you are the last to leave the room,
please turn off the lights!*



W W W . M P H T J . G O V . M Y

FUN FACT!



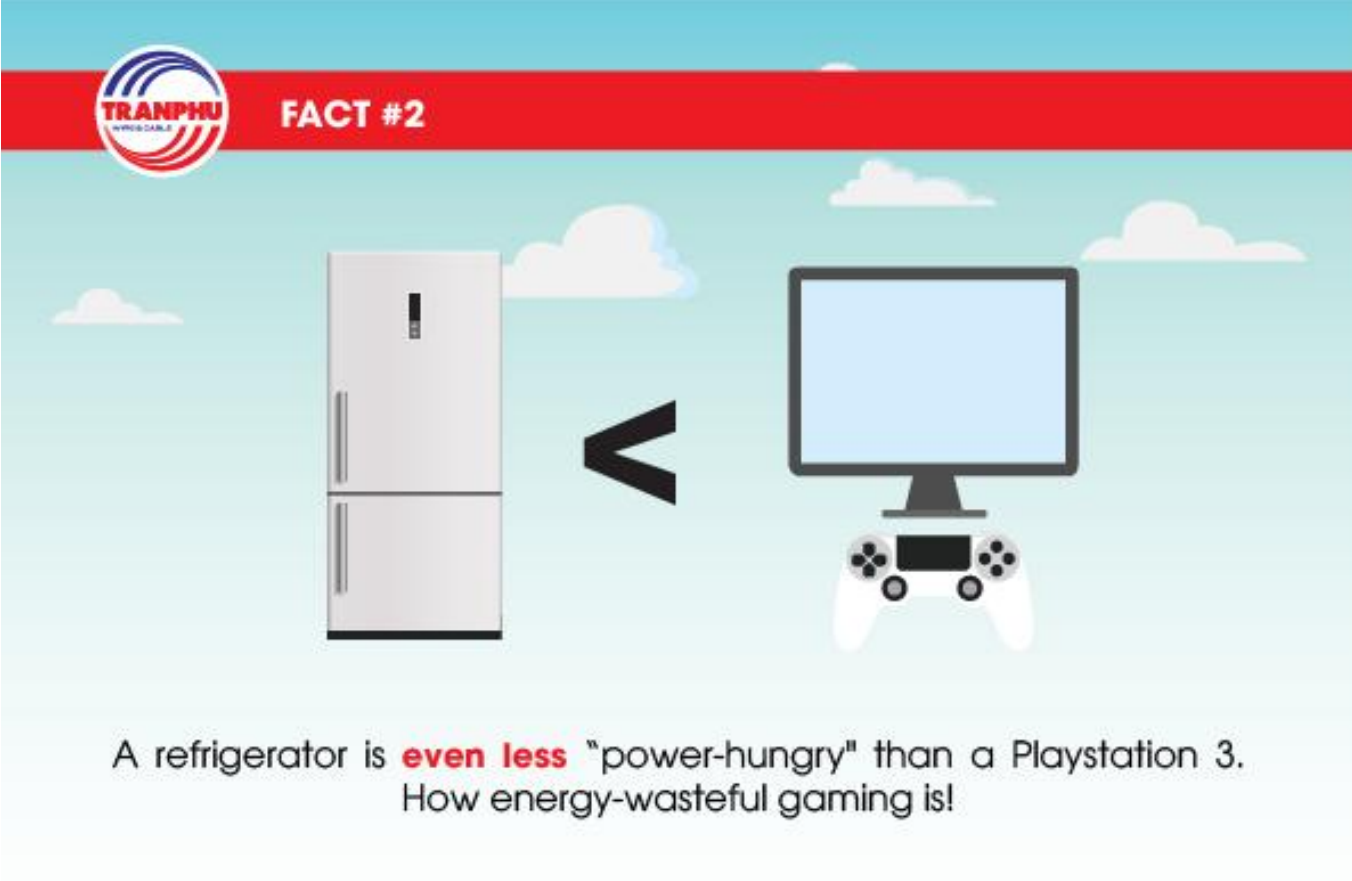
FACT #1



200.000

Google Searches account for about **0.013%** of the world's electricity use. This is equivalent to the amount of electricity to power over **200,000 homes**. The energy needed to perform 100 Google Searches is equivalent to the energy needed to **light a bulb in 28 minutes**.

FUN FACT!



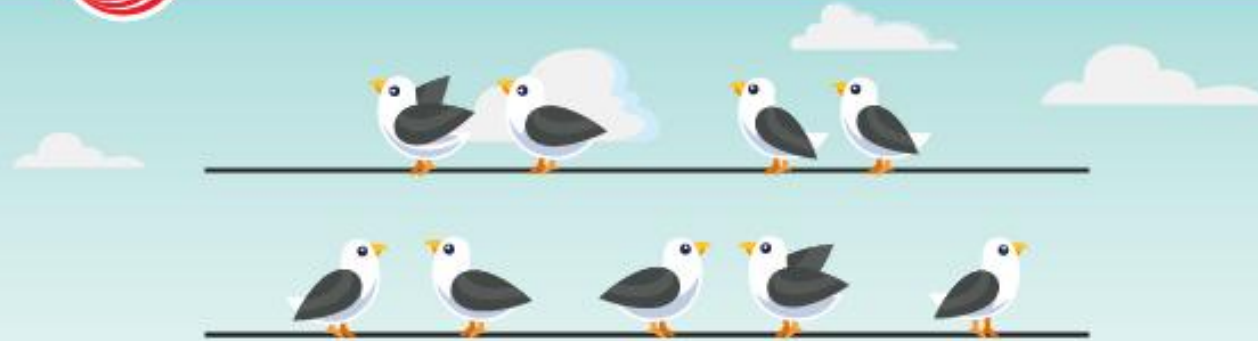
The infographic features a red banner at the top with the 'TRANPHU WINDABLE' logo on the left and the text 'FACT #2' on the right. Below the banner, a refrigerator is positioned on the left and a PlayStation 3 console with its DualShock 3 controller is on the right. A large black less-than sign (<) is placed between them, indicating that the refrigerator consumes less power. The background is a light blue sky with white clouds.

A refrigerator is **even less** "power-hungry" than a Playstation 3.
How energy-wasteful gaming is!

FUN FACT!



FACT #3



The reason why birds do not get electrocuted when they land on wires is that **both of their legs are on a single line**. If a part of the bird's wing or bird's feet touches another power line while the other leg is still on the other one, the circuit will be immediately created, causing the bird to get shocked.

FUN FACT!



FACT #4

1 phút



=

1 năm



1 minute = 1 year

The amount of sunlight shining on the Earth's surface in **1 minute** is enough to provide the whole world energy for **1 year**. Scientists are still doing research to improve the solar panel for more efficient energy-collecting.

FUN FACT!



FACT #5



When a **traditional light bulb** is lit, only **10% of the electrical energy** is used to light the bulb, and the **remaining 90%** generates heat. It is a waste of electricity, isn't it? That is why nowadays, most light bulbs have been replaced by **compact bulbs** which consume far less electricity.

FUN FACT!

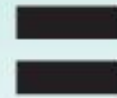


FACT #6

28 millions



500 millions



28 millions = 500 millions

Currently, hydroelectric plants in the United States can provide enough electricity for **28 million households** that is equivalent to about **500 million barrels of oil.**

FUN FACT!



FACT #7



A ceiling lamp may consume over **\$2000** during its useful lifespan.

FUN FACT!



FACT #9



Average, in a house, **75%** of the electricity consumed by **turned-off** devices. For example, the desktop in idle mode consumes **80W**, the laptop one consumes **20W**, the PlayStation consumes **200W** (both when it is activated or not).

FUN FACT!



FACT #10



In 2012, **Wind power** became the new leading source of electricity generation in the United States, providing **nearly 42%** of the total electricity produced.

THANKS FOR WATCHING

www.mphtj.gov.my

